

# Earth Terminals

## ROBUST Earth Terminals(RT Series)

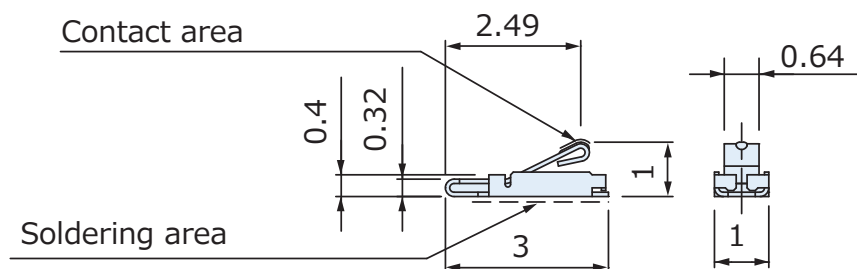


- Contact point deformation prevention structure
- With various stack heights
- The 415CPB-167-□□F and 415CPB-168-□□F substrates have a common layout

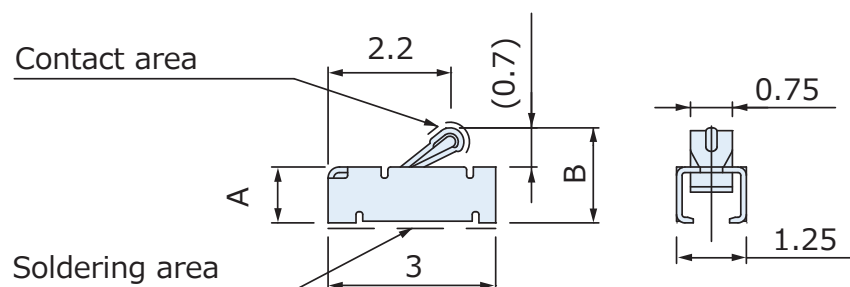
Part No.	Contact Pressure	Working Height	Rating
415CPB-165-52F	0.25~0.6N	0.45~0.75	3A max., 5V DC
415CPB-167-□□F	0.3 ~1.0N	0.6~1.4	2A max., 5V DC
415CPB-168-□□F	0.3 ~1.0N	1.2~3.2	2A max., 5V DC

□□ : Dimensions A and B are different by Part No. Please contact us

### 415CPB-165-52F



### 415CPB-167-□□F



### 415CPB-168-□□F

