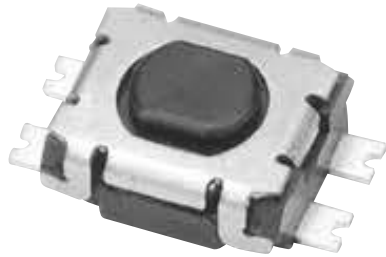


# Push Switches

## High Click Feeling Push Switch



- Rating: 50mA, 12V DC
- Operating Force:  $4.8 \pm 1.0\text{N}$
- Contact Resistance:  $200\text{m}\Omega$  max.
- Insulation Resistance:  $100\text{M}\Omega$  min. at 100V DC
- Travel:  $0.17 \pm 0.1\text{mm}$
- Operating Life: 200,000 cycles

