



Company Profile 2023

**CREATIVE CONNECTIVITY**

—Challenge, Creativity, Solutions

SMK's Vision

# CREATIVE CONNECTIVITY

—Challenge, Creativity, Solutions

Our vision, CREATIVE CONNECTIVITY, highlights our determination to contribute to the creation of a better society and future by connecting people to people, people to products, and products to products creatively to resolve the various challenge before society and customers.

**A company in high demand in society, a company with a culture to develop human resources:  
that is what SMK aspires to be.**

## Contents

02	Top Message
03-05	Market
06	SMK's Connectivity
07	Division
08-12	Sustainability & CSR
13	Medium-Term Business Plan
14	Innovation
15-20	Company Info



Founding Spirit  
**Good Parts Create Good Final Products**

## SMK Philosophy

SMK is committed to the advancement of mankind through development of the information society, by integrating its current technological strengths and creating advanced technology.

## SMK Action Guidelines

1. Contribute to society with pride and confidence.
2. Be customer-oriented, with zeal and sincerity.
3. Challenge courageously for higher goals without fear of failure.
4. Trust and respect each other for a brighter working atmosphere.
5. Keep an open mind, and view SMK from a global perspective.

## Top Message

Since its foundation in 1925, the SMK group has responded appropriately to the changing market while preserving our founding spirit of “Good Parts Create Good Final Products.” And under the SMK Philosophy, we have always developed pioneering technologies and provided attractive products and services to markets and customers around the globe.

The global economy continues to face uncertainty due to prolonged inflation in various countries, continued increases in energy and raw material prices, and escalating geopolitical risks such as the ongoing Ukraine crisis.

On the other hand, the major transformation of the automotive industry by developments in CASE technologies and the rapid progress in the digitalization of society as a whole due to the full-scale spread of 5G and IoT has expanded the fields in which SMK can contribute.

In this environment, the Company is aggressively introducing new products and making its foray into new markets in order to achieve sustainable growth. We are also working to create new business through collaboration with partners and open innovation. At the same time, we aim to contribute to a sustainable society through efforts towards achieving the SDGs and carbon neutrality, and to strengthen our corporate structure by promoting Digital Transformation (DX).

Under our vision of “CREATIVE CONNECTIVITY—Challenge, Creativity, Solutions,” we will continue to strive to become a company that can contribute to the creation of a better society and a future by providing creativity to generate creative ideas and problem-solving solutions with a challenging spirit to solve various issues faced by society and our customers.



President, CEO and COO  
**Yasumitsu Ikeda**



Information and Communication Technology

### ICT

- Smartphone
- Tablet
- PC
- Wearable
- Network Equipment
- Tracking Device
- Electronic Dictionary

### Industry/Others

- Solar power generation equipment
- Healthcare
- Lighting Equipment
- Multi-functional Machine equipment
- ECR/POS
- Industrial Robot



### Home Appliance

- TV
- STB
- Smart Speaker
- Air Conditioner
- Gaming Console
- Sanitary
- Housing Equipment
- Home Security

### Car Electronics

- CASE
- Car Navigation Equipment
- Display Audio
- IVI
- Electrical Device
- ECU



In use all around you.

# ICT



Terminals for Small Mobile Devices



USB Type-C® Receptacles



φ3.5mm Mini Jacks



RF Board to Board Connectors



Capacitive Touch Switches



Mini 1-Dome Switches



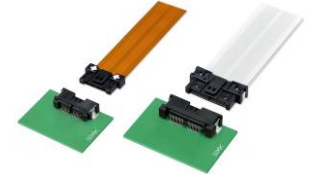
# Car Electronics



Automotive Camera Connectors



Coaxial FAKRA Connectors



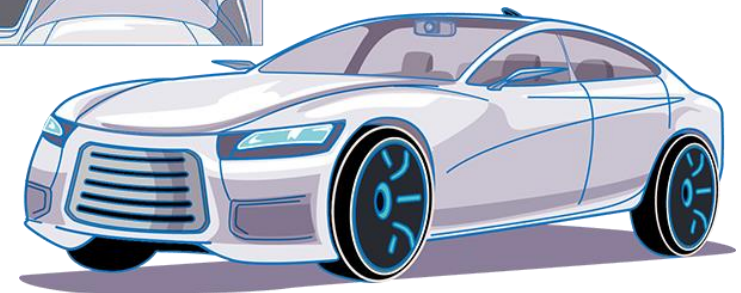
FPC/FFC Connectors with Locking Structure



Resistive Film/Glass Touch Panels



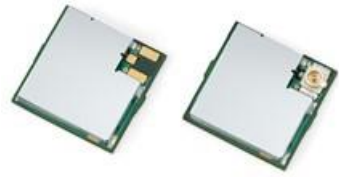
Capacitive Touch Panels with Large Curved Cover Glass



# Home Appliance & Industry/Others



Connectors for Photovoltaic Modules



Sub-GHz Communication Modules



SMK Standard RC for Android TV™



Card-Style Remote Control Units



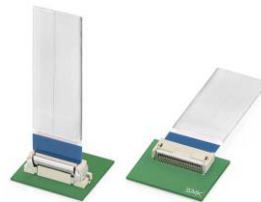
"Milweb™" Millimeter Wave Sensors



Jacks



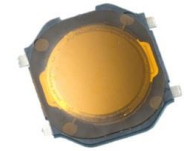
Jog Dial on Touch Panels



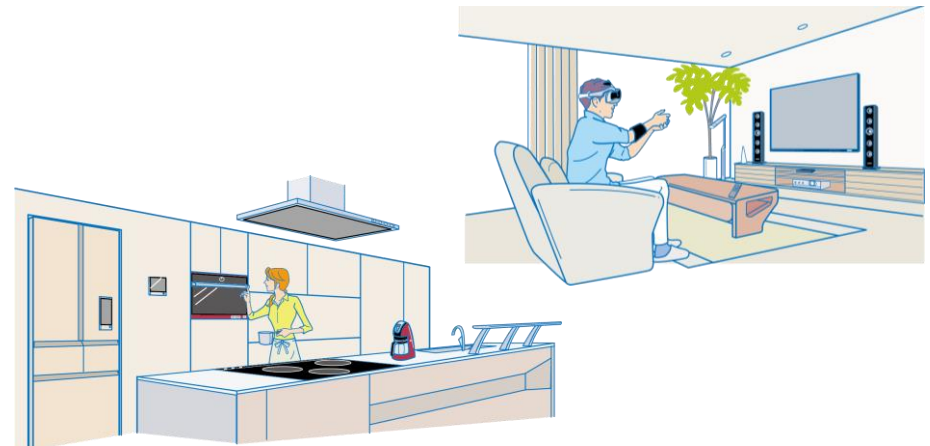
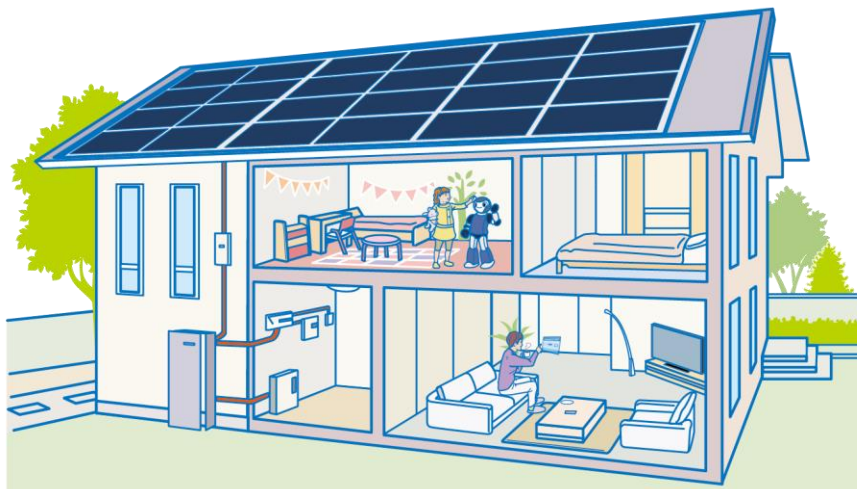
0.5mm Pitch One Action FPC/FFC Connectors



Capacitive Touch Panels



Top Push Switches







Our marketing and sales collects and analyzes the latest data for a range of markets and expands development proposals for new products and the opening up of new markets. SMK's two product divisions and the Research & Development Center develop and manufacture a wide variety of products for use in various fields. With the pursuit of high-level technology and speedy cost response capabilities as our key words, each department—Production Engineering, which establishes higher-level, efficient product systems; Quality Assurance, which believes in absolute quality and serves as the pivotal point for SMK's quality; and Human Resources, which trains the people who support SMK based on the spirit of "autonomy, self-help, and independence"—is linked transnationally, providing proposals to make society richer and more comfortable.

### CS Division

Connectors are the cornerstone of electronics. We contribute to improving added value for customer products, using the techniques for miniaturization, high currents and high speed transmission we have developed over the years to make mobile devices smaller and thinner, to increase current in industrial devices, or to increase the transmission speed of car electronics. We are expanding into a wide range of markets, with uses as diverse as smartphones, tablets, car electronics, and IoT home appliances, as well as wearable devices, the environment and energy, and medical and healthcare areas.

\* CS: Connection System



FPC to Board Connectors



USB Type-C® Receptacles



Connectors for Photovoltaic Modules



Coaxial FAKRA Connectors



### SCI Division

In addition to our main products such as remote control units, switches, camera modules, and touch panels, we are working on creating new markets, new business, and new products by accelerating the development of "Sensing" technology supporting the IoT era, "Communication" technology contributing to the advancement of an information society, and "Interface" technology pursuing better operability in automotive and other application.

\* SCI: Sensing, Communications and Interface



SMK Standard RC for Android TV™



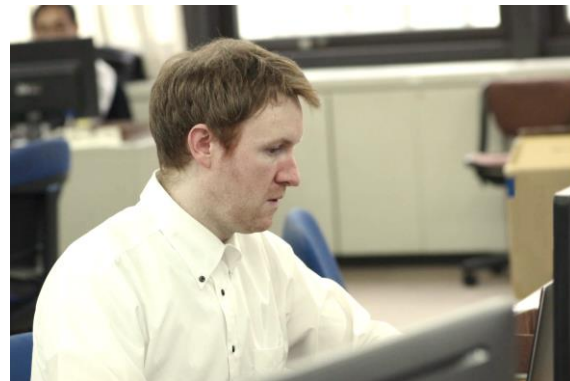
Push Switches



Ambient Sensor Units

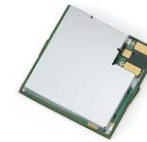


Capacitive Touch Panels

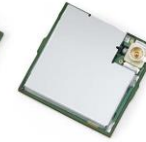


### Research & Development Center

The R&D center is engaged in research and development of products using new technologies. We focus on products based on high-frequency technologies, such as Sub-GHz communication modules and NFC antennas. Additionally, we are advancing the development of products for promising fields such as healthcare and automotive applications with EMG sensors, algorithms for muscle activity visualization, and radio radar-based vital sensors.



Sub-GHz Communication Modules



NFC Antennas



EMG Sensors





# For a Future Where Everyone Can Smile

SUSTAINABLE  
DEVELOPMENT **GOALS**

Donation of school chairs made from used wooden pallets ( 2013–2020 Philippines)



# Solving social issues through products and services



## “Milweb™” Millimeter Wave Sensors

SMK has developed the “Milweb™” millimeter wave sensor, which combines a sensor that detects distance, speed, and angle with a proprietary algorithm that processes the gathered data. Three different types of algorithms are available: “Milweb™ Animal” to monitor animals, “Milweb™ Assistant” to detect the number and location of people, and “Milweb™ Action” suitable for outdoor motion detection.



Product Image

## Ambient Sensor Units

Featuring hybrid power supply system that combines energy harvesting by photovoltaic batteries and far-field wireless power transfer (WPT) technology to convert Sub-GHz microwaves into electricity. No battery replacement is required, resulting in reduced environmental impact, lower running costs, and less need for maintenance.

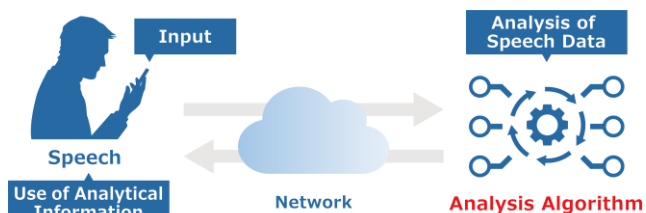


Product Image



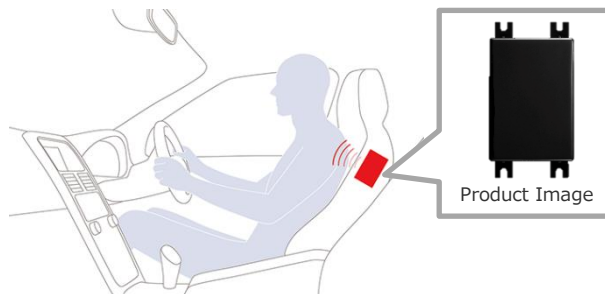
## Technology to Analyze Illness and Emotions Through Speech

Research and development are being conducted on an algorithm to support the diagnosis of dementia using Japanese speech. Speech data using any phrase about 30 seconds long allows for the analysis of latent brain-related diseases and emotions as well as diagnostic support. (Joint R&D of SMK, National Cerebral and Cardiovascular Center, and Canary Speech, Inc.)



## Radar-Based Vital Sensor (for Automotive Use)

The sensor uses radar-based sensing technology to collect biometric data (heart rate, respiration data, etc.) of drivers and passengers. As a sensor that can detect the driver's condition, it can be applied to alerting the driver in abnormal situations (drowsiness, loss of concentration, and sudden changes in physical condition) and creating a more comfortable car interior.





# Solving social issues through business activities

## Environmental Management

- Carbon neutral
- Reduction of greenhouse gases
- Efficient use of resources
- Eco-friendly products (resource and energy saving)
- Biodiversity

E

## Social Responsibility

- Quality assurance
- Supply chain
- Respect for human rights and diversity
- Human resource development
- Fair trading
- CSR procurement
- Social contribution

S

G

## Corporate Governance

- Corporate governance
- Compliance
- Risk management
- Information management

### Carbon Neutral



At SMK, we set a goal to achieve carbon neutrality by 2045, setting up a Carbon Neutral Taskforce and working across the SMK Group as a whole to achieve this goal.



Solar power generation equipments (rooftop)

Toyama Works

### Responsible Procurement



Under the recognition that “the environment is one of the important matters for corporate management,” we have promoted environmental initiatives in many aspects such as the development of products and in all activities at each of our locations.

At the same time, we have developed Green Procurement Guidelines to help materialize the creation of eco-friendly products and eco-conscious business activities with our business partners.



### SMK Group Code of Conduct

The SMK Group Code of Conduct, which outlines conduct to be observed by employees, was established in April 2006. It was revised in accordance with the changes in the environment surrounding CSR, with the fourth edition issued in April 2021.



### Quality Assurance



SMK aims to achieve Zero Defect (ZD). We are particularly focused on preventing problems in the manufacturing process from occurring earlier in the product development stage by Front-Loading development and Design Review.



### Social Contribution



As a responsible corporation, we have been involved in a range of efforts including social welfare activities and regional contributions. In addition to tree planting activities and local beautification activities, we also have an intern acceptance program, hold manufacturing classes for elementary school students and participate in local festivals, and will continue to conduct these activities in the future.



Public Interest Incorporated Foundation

Showa Ikeda Memorial Foundation



Established in 1976 in celebration of the 50th anniversary of the founding of the Company through the personal investment of SMK founder, the late Mr. Heishiro Ikeda and his wife, the late Mrs. Shizuko Ikeda, with partial donations from the Company.

Since its founding, the Foundation has carried out a number of charitable activities such as scholarship programs, social welfare projects and supporting traditional performing arts, and was certified as a public interest incorporated foundation in 2013.

At SMK, we promote activities to save energy and resources as an important management policy to help prevent global warming. We strive to contribute to local communities through various initiatives.

**Striving for Carbon Neutrality**

SMK has set a medium- to long-term goal of achieving carbon neutrality by 2045. As it is an initiative that will take place over a long period of time, we will ensure that knowledge is passed down across generations to steadily achieve this goal.

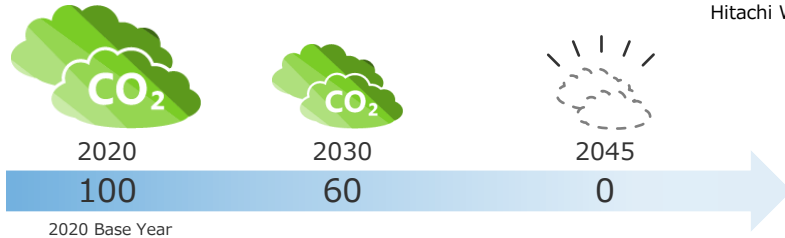
**Main initiatives**

- Expansion of energy-saving equipment
- Expansion of renewable energy power generation facilities



Solar power generation equipments(rooftop)  
Hitachi Works

Reduction of CO<sub>2</sub> emissions per unit of production value (Scope1+2)



**SMK Environmental Charter**

**1. Basic Philosophy**

The SMK Group pursues environmental conservation as well as economic development by integrating its current technological strengths and creating advanced technology. As a good corporate citizen, every one of us will contribute to the promotion of sustainable global development.

**2. Action Guidelines**

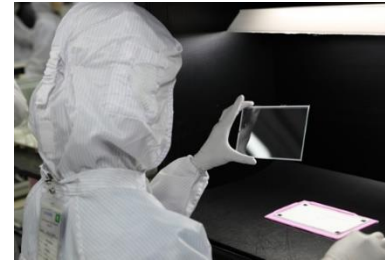
- (1) Develop environmentally friendly products
- (2) Reduce waste by using everything to its fullest extent
- (3) Preserve natural resources and saving of energy
- (4) Encourage 3R (reduce, reuse, and recycle)
- (5) Realize waste-free procurement and manufacturing

Learn more



**Tackling Quality Improvement**

At SMK, we employ an integrated quality management system based on the international standard ISO9001, and the basic concept is Ultimate Quality Management. This involves employees not just from divisions directly involved in production, but throughout the entire company.



**Supply Chain Management**

To provide products to customers, SMK receive assistance from many business partners and all our powers are added together to make a product. As long as that product is presented to the customer under the SMK name, SMK has an obligation to manage the supply chain, including its business partners. SMK orders from business partners only after a strict qualification, including an on-site process audit for new business partners. Audits are carried out at regular intervals and process line management activities are also checked. In addition, we hold regular quality meetings with business partners and provide recurring feedback on quality trends, while also discussing and sharing information on matters such as technical problem solutions.

**Responsible Mineral Procurement**

SMK strives to avoid the use of conflict minerals, which is globally considered as a problem. We also monitor whether actions contrary to social responsibilities have been taken by local trade partners and business partners, and provide guidance in such cases. Thus, we ensure transparency of the supply chain in cooperation with our business partners.

**Promotion of Women's Participation**

SMK has long promoted the building of an organization that respects diversity of human resources, and we employ a diverse range of people regardless of nationality or gender. We believe that the active participation of women is also an important management policy and offer systems to support the balance between work and child-rearing, create an environment where female employees can fulfill their potential, and promote a shift of awareness within the company.

Learn more





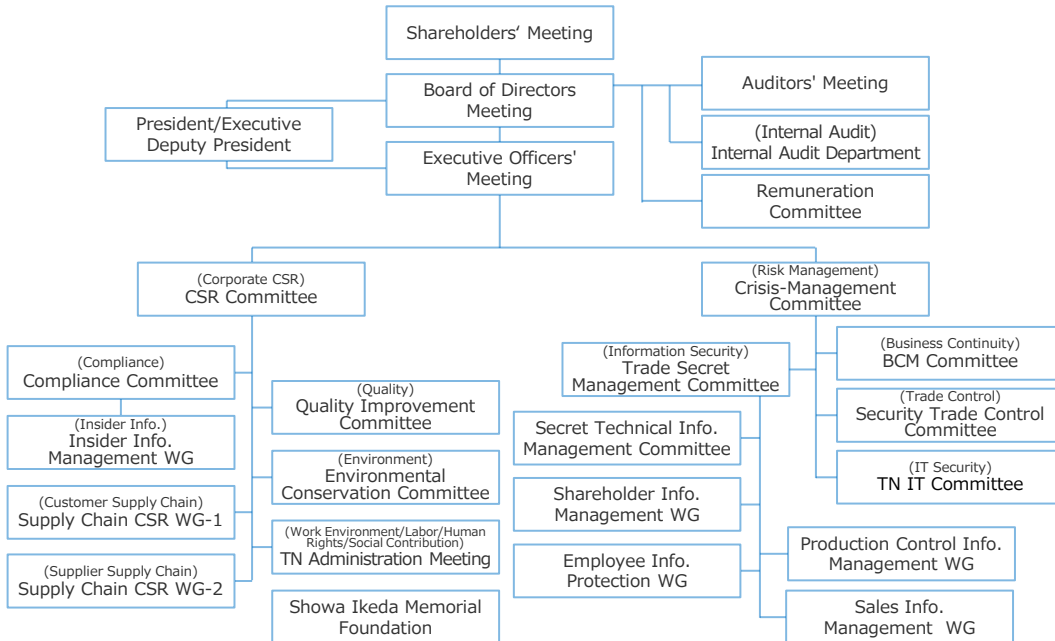
Achieving a sustainable society requires the promotion of CSR (Corporate Social Responsibility) by companies that have a major effect on society. SMK promotes CSR from a range of angles in order to meet our social responsibilities in our business activities both in Japan and overseas.

In 1997, we established the SMK Group Charter for Corporate Behavior as an announcement of our stance on approaches to CSR. In addition, we have adopted the concept of "PSR" (Personal Social Responsibility), which is unique to SMK, and established the SMK Group Code of Conduct in 2006 to request each employee to consider CSR and act responsibly. In line with the establishment of this Code, we have also set up the SMK Ethics Helpline, with contact portals both in the company and outside.

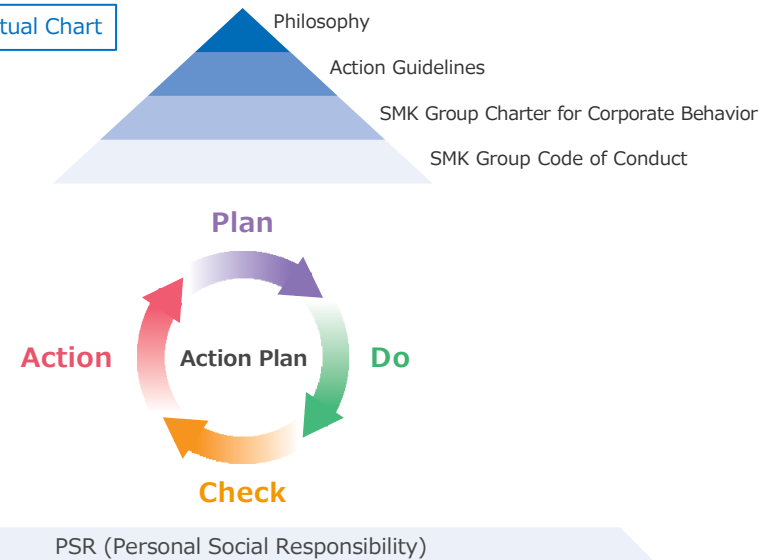
We also carry out regular questionnaires on the extent of compliance within SMK targeted at our business partners and customer satisfaction surveys targeted at our customers, reflecting the valuable feedback in our CSR activities.

In terms of risk management, which we have long been dealing with, we revised and strengthened our group-wide BCM (Business Continuity Management) after the Great East Japan Earthquake in 2011, minimizing the effects of a major disaster or other incident on our business activities, thus working to fulfill our responsibilities towards stakeholders.

Corporate Governance Diagram



SMK CSR Conceptual Chart



SMK Group Charter for Corporate Behavior

1. For customer confidence, we will develop and provide superior goods in terms of quality, cost, and safety through our accumulated advanced technology.
2. To be understood/supported by stakeholders such as customers, business partners, and shareholders, we will engage in fair, transparent, and free competition, under the spirit of independence, self-help, and self-regulation.
3. We will promote communication with society, by fairly disclosing corporate information, as an open enterprise in the advanced information network age. In addition, we will protect and properly manage personal and customer data and other types of information.
4. We will take independent and positive action, fully recognizing the necessity of environment conservation.
5. We will strive to make it possible for employees to lead pleasant and enriched lives, by guaranteeing a comfortable and safe work environment and respecting our employees' dignity and individuality.
6. We will actively engage in social contribution activities as a good corporate citizen.
7. We will stand firm against anti-social forces and organizations that threaten the order and security of civil society.
8. In overseas operations, we will comply with the laws and regulations of the countries and regions, respect human rights and other international norms, and manage ourselves in a manner that contributes to local development.
9. To make the spirit of the Charter a reality, top executives will always listen to the voices within and outside SMK, take the lead in raising awareness of the Charter among all relevant Group members and to bring corporate systems into line with it, and endeavor to cultivate corporate ethics.
10. When the Charter is violated, top executives will take the initiative in resolving the problem, endeavoring to clarify its causes and prevent its recurrence, and take the necessary action. This includes precise explanation to the society and punishment for responsible persons, including themselves.

Learn more



# Toward New Growth — Confidence & Transformation

## Medium-Term Business Plan FY2021-FY2023

SMK is currently working on our Medium-Term Business Plan for the three-year period of FY2021 to FY2023. We will solidify our business foundation by implementing growth strategies and further strengthening our corporate structure.

### Basic Policy

Expand sales and generate stable profits

Reform corporate structure for new growth

### [ FY2023 Target ]

Net sales

**60.7** billion yen

Operating profit

**3.1** billion yen

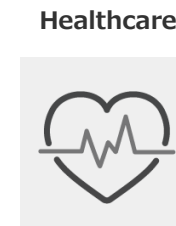
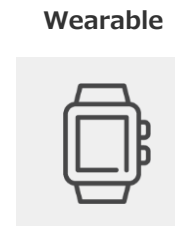
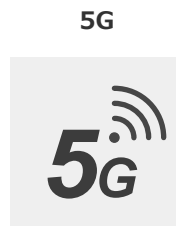
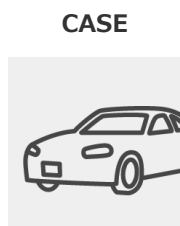
Operating profit margin

**5** %

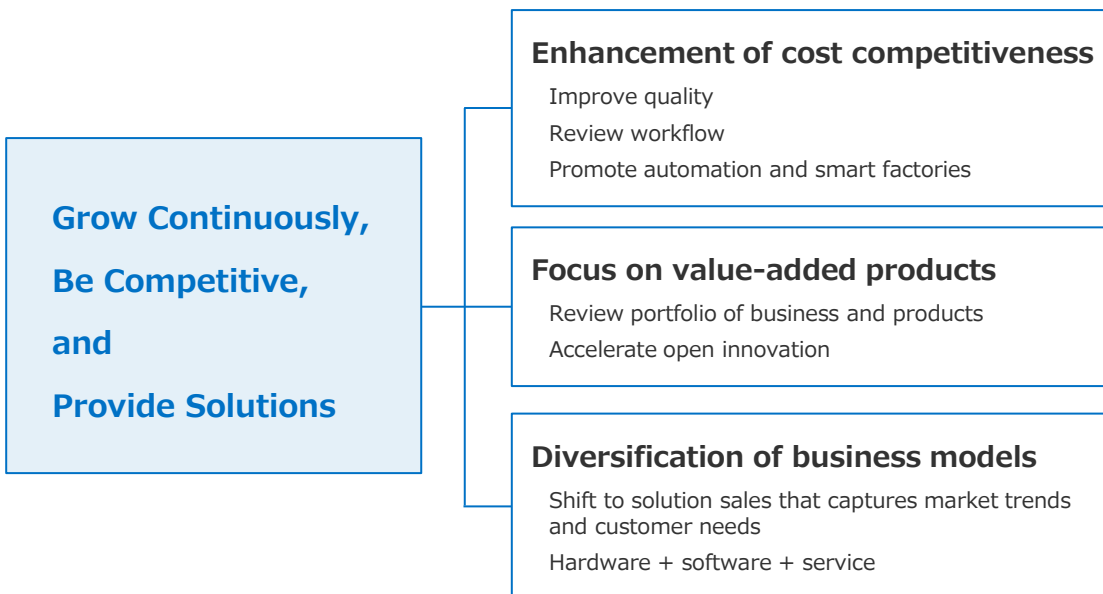
Return on equity

**8** %

### [ Growth Markets to Focus On ]



### [ TRANSFORMATION Toward FY2023 ]





[ Open Innovation by SMK ]

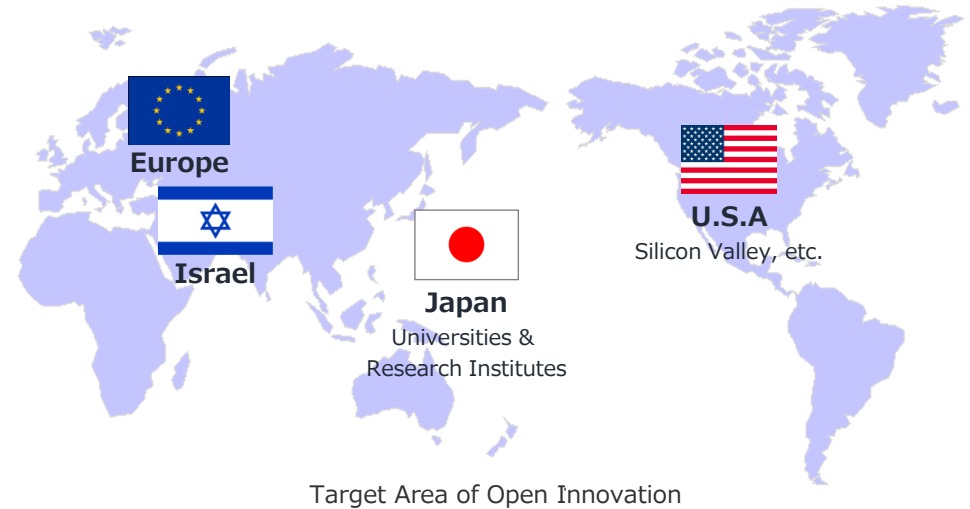
SMK has long worked on open innovation and has gained a great deal of experience and achievements. We search through more than 1,000 companies annually for technologies around the world, mainly from Europe, the United States, Japan and Israel, and have built up a proven record of various technological verifications and PoCs, producing a large number of different businesses working toward mass production. We promote the creation of new solutions and businesses that can be deployed on a global scale by combining cutting-edge algorithms, AI and other technologies of startup companies with SMK's mass production design and manufacturing expertise.



[ SMK's Innovation Matching ]

SMK's development themes cover a wide range and we conduct technology discovery with many different keywords, such as biometric sensors, malfunction detection, camera technology, car electronics, HMI and predictive algorithms.

As information sources, the Company has many networks at its disposal including venture capital, embassies, universities, and trade shows, and constantly examines the information gathered. SMK's project teams promote business development by innovatively matching the internally assessed technology seeds with customer issues and needs.



[ UWB Type Monitoring Sensor ]

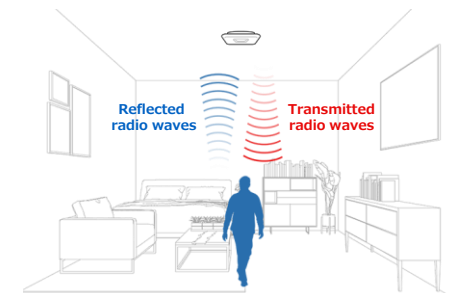
A high-functional, non-contact, camera-less radar-based monitoring system. By analyzing the radio waves reflected from the subject, the system detects their location, position, breathing, and intensity of movements.

A proprietary algorithm that uses AI and machine learning analyzes this data, making it possible to detect abnormal conditions such as falls and submersion in bathtubs with high accuracy.

It can be used in a variety of situations to monitor daily life situations safely and securely.



Product Image





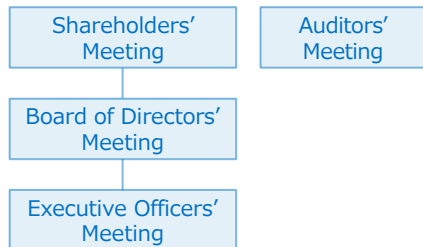
## Company Info

### Outline as of March 31, 2023

- Company Name SMK Corporation
- Established 1925
- Capital 7,996 million yen
- Stock Exchange Listing Tokyo Stock Exchange, Prime Market (Securities Code: 6798)
- Shares  
Authorized shares 19,596,127  
Issued shares 7,200,000
- Settlement Term March 31
- Sales 54,842 million yen (Consolidated)
- Employees 4,607 (Consolidated)
- Head Office 5-5, Togoshi 6-chome, Shinagawa-ku, Tokyo 142-8511
- URL <https://www.smk.co.jp/>

as of June 27, 2023

## Directors



President, Chief Executive Officer and Chief Operating Officer  
Yasumitsu Ikeda



Director and Executive Deputy President, Chief Technology Officer  
Masanobu Ieko



Director and Executive Vice President  
Paul Evans



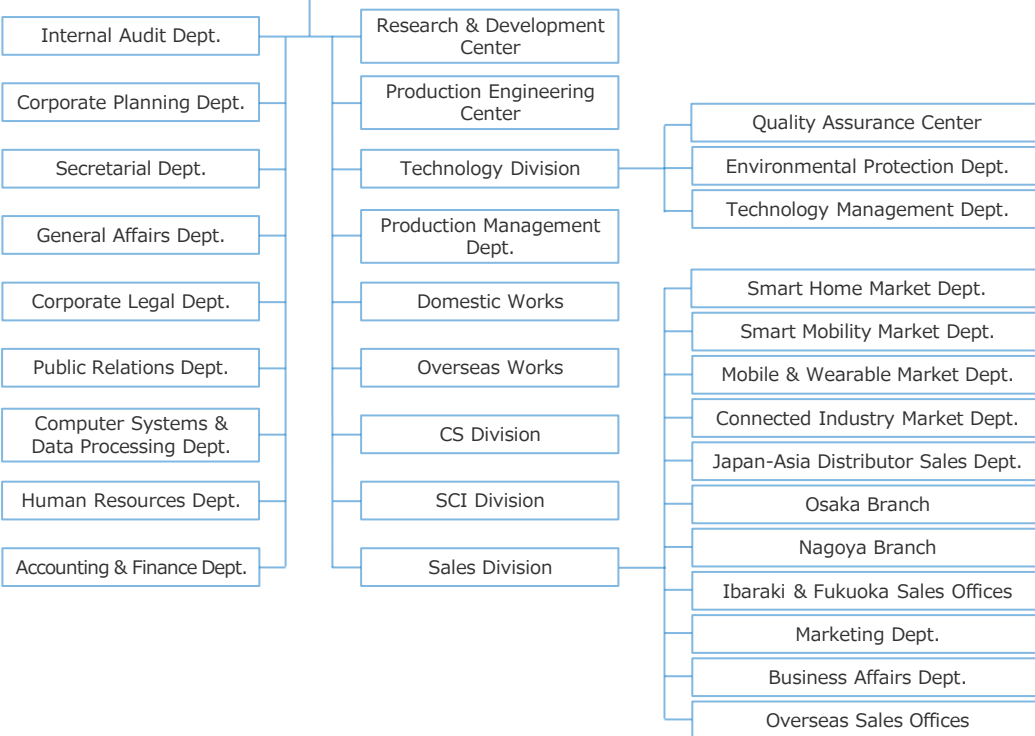
Director and Executive Vice President  
Tetsuo Hara



Director (Outside)  
Toshio Nakamura



Director (Outside)  
Kaoru Ishikawa



## Auditors



Full-Time Auditor (Outside)  
Morikazu Fukui



Auditor (Outside)  
Naru Nakashima



Auditor (Outside)  
Fumio Nishimura

## Executive Officers



Executive Vice President, Chief Financial Officer  
Kohei Ohgaki



Executive Vice President, Chief Information Officer  
Hiroshi Usami



Vice President  
Mitsuyuki Masubuchi



Vice President  
Fumikazu Hata



Vice President  
Mikio Otsubo



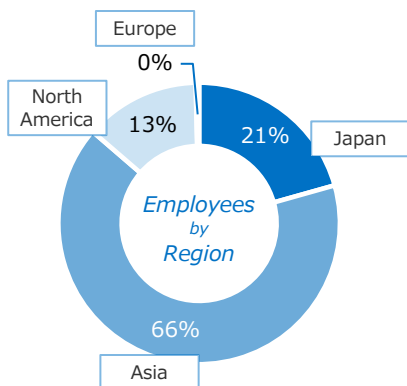
Vice President  
Hideo Sugano



Global Network

39 sites in 16 areas

29 sales offices 9 works 9 R&D locations



Employees (Consolidated)

4,607

Average Years of Employment (limited to SMK Corporation)

20.6 years



Patents Held

487



CO<sub>2</sub> Emissions vs FY2020 Medium- to Long-Term Target Benchmark Year

24% DOWN



Ratio of Outside Auditors

100%

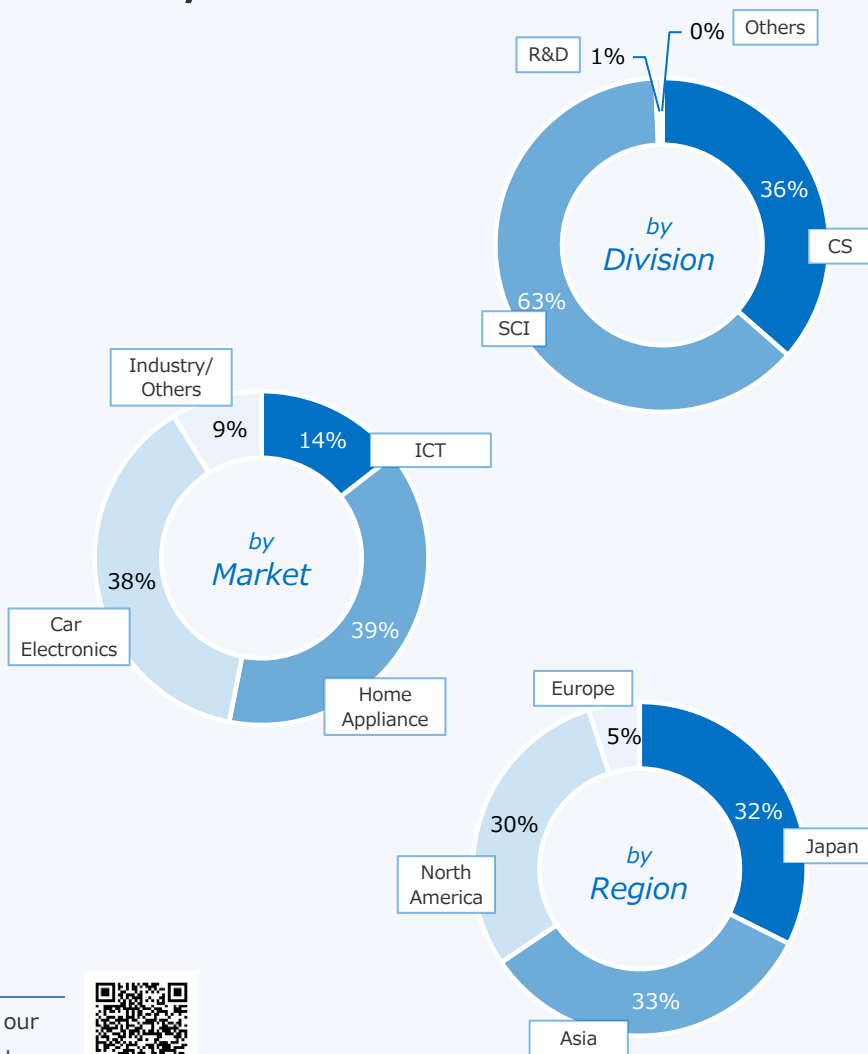
ESG data

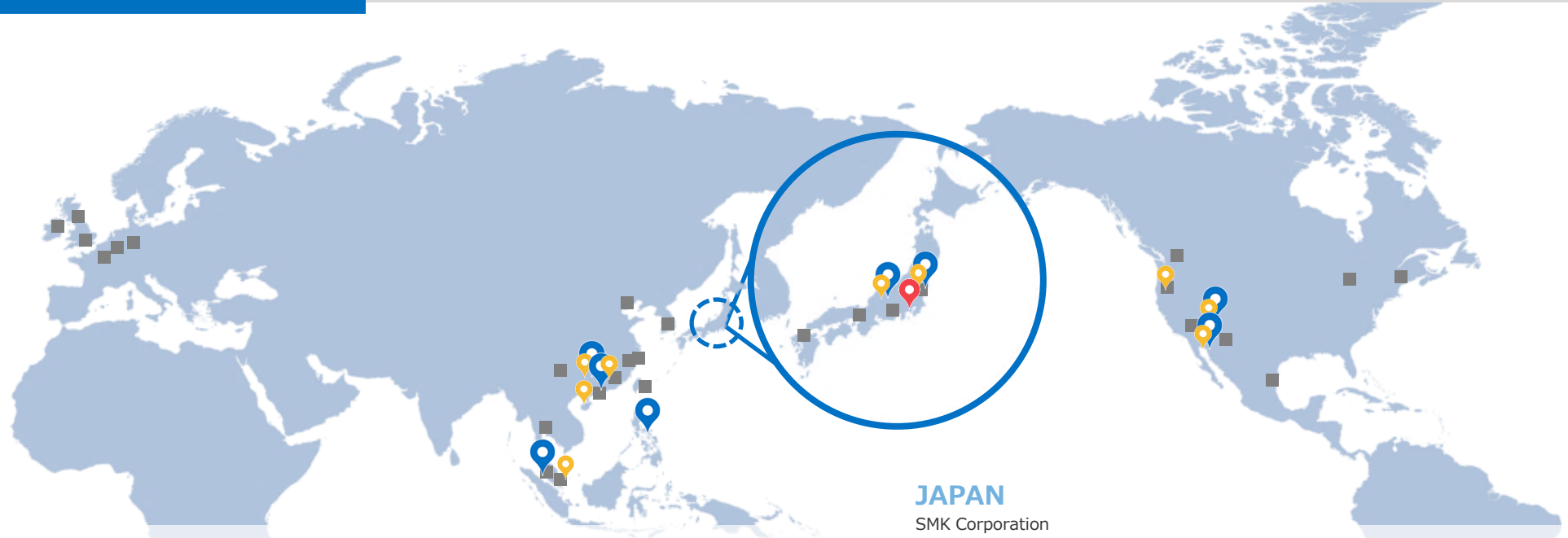
Please find an overview of our sustainability performance here.



FY2022 Net Sales (Consolidated)

54,842 million yen





### EUROPE

- SMK Electronics (Europe) Limited Dublin H.Q.
- SMK Electronics (Europe) Limited U.K. Branch
- SMK Electronics (Europe) Limited U.K. South Office
- SMK Electronics (Europe) Limited France Office
- SMK Electronics (Europe) Limited Dusseldorf Branch
- SMK Electronics (Europe) Limited Belgium Office

### ASEAN

- SMK Electronics Singapore Pte. Ltd.
- SMK Electronics Singapore Pte. Ltd. Design Center
- SMK Electronics Singapore Pte. Ltd. Thailand Representative Office
- SMK Electronics (Malaysia) Sdn. Bhd.
- SMK Electronics (Philis.) Corporation

### ASIA

- SMK High-Tech Taiwan Trading Co., Ltd.
- SMK Electronics (H.K.) Ltd.
- SMK Trading (H.K.) Ltd.
- SMK Electronics (Dongguan) Co., Ltd.
- SMK Electronics (Shenzhen) Co., Ltd.
- SMK Electronics Trading (Shenzhen) Co., Ltd.
- SMK Electronics Trading (Shenzhen) Co., Ltd. Chongqing SOHO
- SMK Electronics Technology Development (Shenzhen) Co., Ltd.
- SMK Electronics Trading (Shanghai) Co., Ltd.
- SMK Electronics Int'l. Trading (Shanghai) Co., Ltd.
- SMK Electronics Int'l. Trading (Shanghai) Co., Ltd. Beijing Office
- SMK Korea Co., Ltd.

### JAPAN

- SMK Corporation
- Head Office
- Osaka Branch
- Nagoya Branch
- Ibaraki Sales Office
- Fukuoka Sales Office
- Toyama Works
- Hitachi Works

Sales Office
  Works
  R&D Locations

### AMERICA

- SMK Electronics Corporation, U.S.A., San Diego H.Q.
- SMK Electronics Corporation, U.S.A., San Jose Office
- SMK Electronics Corporation, U.S.A., New York Office
- SMK Electronics Corporation, U.S.A., Seattle Office
- SMK Electronics Corporation, U.S.A., Detroit Office
- SMK Manufacturing, Inc.
- SMK Electronica S.A. de C.V.
- SMK Mexicana, S. de R. L. de C. V. Tijuana Office
- SMK Mexicana, S. de R. L. de C. V. Mexico City Office



Head Office



SMK Electronics (Philis.) Corporation



SMK Electronics (Dongguan) Co., Ltd.



SMK Electronica S.A. de C.V.



SMK Electronics (Shenzhen) Co., Ltd.

Japan

**Head Office** ■ ■  
5-5, Togoshi 6-chome, Shinagawa-ku,  
Tokyo 142-8511, Japan  
Phone: +81-3-3785-1111  
Fax: +81-3-3785-1068

**Osaka Branch** ■  
3F, ONEST Shin-Osaka Square, 4-5-36 Miyahara,  
Yodogawa-ku, Osaka-shi, Osaka 532-0003 JAPAN  
Phone: +81-6-6953-7222  
Fax: +81-6-6953-7221

**Nagoya Branch** ■  
6F, KS Building, 19-13 Noritake 1-chome,  
Nakamura-ku, Nagoya-shi, Aichi 453-0014, Japan  
Phone: +81-52-453-3011  
Fax: +81-52-453-3015

**Ibaraki Sales Office** ■  
20-9 Ishi, Juo-cho, Hitachi-shi,  
Ibaraki 319-1301, Japan  
Phone: +81-294-20-2144  
Fax: +81-294-20-2145

**Fukuoka Sales Office** ■  
6F, Yaoji Building, 25-24, Hakataekimae 3-chome,  
Hakata-ku, Fukuoka-shi, Fukuoka 812-0011, Japan  
Phone: +81-92-472-7236  
Fax: +81-92-475-6943

**Toyama Works** ■ ■  
1-1, Yasuuchi, Yatsuo-machi, Toyama-shi,  
Toyama 939-2366, Japan  
Phone: +81-76-455-1212  
Fax: +81-76-455-1759

**Hitachi Works** ■ ■  
20-9 Ishi, Juo-cho, Hitachi-shi,  
Ibaraki 319-1301, Japan  
Phone: +81-294-20-2111  
Fax: +81-294-20-2135

Asia

**SMK High-Tech Taiwan Trading Co., Ltd.** ■  
12F-2, No.87, Sung Chiang Road, Zhongshan District,  
Taipei, 104-86, TAIWAN  
Phone: +886-2-2518-3650  
Fax: +886-2-2518-4815

**SMK Electronics (H.K.) Ltd.** ■  
**SMK Trading (H.K.) Ltd.** ■  
Unit E, 9/F, No. 15 Wang Chiu Road, Kowloon Bay,  
Kowloon, HONG KONG  
Phone: +852-2795-4451  
Fax: +852-2795-4434

**SMK Electronics (Dongguan) Co., Ltd.** ■ ■  
Second East Turning, Zhenxing Road, Gaobu Town,  
Dongguan, Guangdong, 523289, CHINA  
Phone: +86-769-8887-3451~3  
Fax: +86-769-8887-3450

**SMK Electronics (Shenzhen) Co., Ltd.** ■  
Section 5, Bldg. 23, Baiwangxin Industrial Area,  
Songbai Road, Xili Street, Nanshan District, Shenzhen,  
Guangdong, 518108, CHINA  
Phone: +86-755-8600-0999  
Fax: +86-755-8600-1969

**SMK Electronics Trading (Shenzhen) Co., Ltd.** ■  
9th Floor Room F, Tairan Jinsong Building,  
26 Tairan 4 Road, Futian District, Shenzhen, Guangdong,  
518040, CHINA  
Phone: +86-755-8304-0990  
Fax: +86-755-8304-0880

**SMK Electronics Trading (Shenzhen) Co., Ltd.**  
**Chongqing SOHO** ■  
Room 14-1, Unit 1 building 10, Guobin Town hilltop Road,  
No.18 xingai Avenue, Yubei District, Chongqing, 401147,  
CHINA  
Phone: +86-186-2364-0714

**SMK Electronics Technology Development**  
**(Shenzhen) Co., Ltd.** ■  
New Jianxing Block A 901, Jianxing Science & Technology  
Building, ShaHe West Road, Nanshan District, Shenzhen,  
Guangdong, 518055, CHINA  
Phone: +86-755-8600-7997  
Fax: +86-755-8600-7997

**SMK Electronics Trading (Shanghai) Co., Ltd.** ■  
Room C706A, Orient International Plaza No.85  
Lou Shan Guan Road, Shanghai, 200336, CHINA  
Phone: +86-21-6278-5600  
Fax: +86-21-6278-5601

**SMK Electronics Int'l. Trading (Shanghai) Co., Ltd.** ■  
Room C707, Orient International Plaza No.85  
Lou Shan Guan Road, Shanghai, 200336, CHINA  
Phone: +86-21-6278-5600  
Fax: +86-21-6278-5601

**SMK Electronics Int'l. Trading (Shanghai) Co., Ltd.**  
**Beijing Office** ■  
Postal Code 101318 Room 610, Block B, Juhong Building,  
No. 9 Anqing Street, Shunyi District, Beijing City, CHINA  
Phone: +86-10-6461-4001

**SMK Electronics Singapore Pte. Ltd.** ■  
12 Tannery Road #04-02  
SINGAPORE 347722  
Phone: +65-6745-0951  
Fax: +65-6746-7838

**SMK Electronics Singapore Pte. Ltd. Design Center** ■  
12 Tannery Road #04-02  
SINGAPORE 347722  
Phone: +65-6745-0951  
Fax: +65-6746-7838

**SMK Electronics Singapore Pte. Ltd. Thailand**  
**Representative Office** ■  
24/F, Chamchuri Square, 319 Phaya Thai Road,  
Office no 24082, Pathum Wan, Pathum Wan,  
Bangkok 10330, THAILAND  
Phone: +66-2-007-2179  
Fax: +66-2-007-2101

■ Sales Office ■ Works ■ R&D Locations

America

**SMK Electronics Corporation, U.S.A. San Diego H.Q.** ■ ■  
1055 Tierra Del Rey  
Chula Vista, California 91910 U.S.A.  
Phone: +1-619-216-6400  
Fax: +1-619-216-6499

**SMK Electronics Corporation, U.S.A.**  
**San Jose Office** ■ ■  
2077 Gateway Place, Suite 150  
San Jose, California 95110 U.S.A.  
Phone: +1-408-436-2206  
Fax: +1-408-436-8081

**SMK Electronics Corporation, U.S.A.**  
**New York Office** ■  
399 Knollwood Road, Suite #103  
White Plains, New York 10603-1900 U.S.A.  
Phone: +1-914-328-9150  
Fax: +1-914-328-9552

**SMK Electronics Corporation, U.S.A. Seattle Office** ■ ■  
16625 Redmond Way, Suite M PMB 346  
Redmond, Washington 98052 U.S.A.  
Phone: +1-425-961-0018  
Fax: +1-425-484-6275

**SMK Electronics Corporation, U.S.A. Detroit Office** ■ ■  
39209 Six Mile Road  
Livonia, Michigan 48152 U.S.A.  
Phone: +1-734-452-0545  
Fax: +1-734-293-4234

**SMK Manufacturing, Inc.** ■ ■  
1055 Tierra Del Rey  
Chula Vista, California 91910 U.S.A.  
Phone: +1-619-216-6400  
Fax: +1-619-216-6498

**SMK Electronica S.A. de C.V.** ■ ■  
Calle Aguila Azteca No.19308,  
Nave No.B Planta 2, Col. Bajamaq El Aguila,  
Tijuana B.C, C.P. 22215, MEXICO  
Phone: +52-664-625-9680  
Fax: +52-664-625-9681

**SMK Mexicana S.R.L. de C.V. Tijuana Office** ■ ■  
Calle Aguila Azteca No.19308, Nave No.B Planta 2, Col.  
Bajamaq El Aguila, Tijuana B.C, C.P. 22215, MEXICO  
Phone: +52-664-625-9680  
Fax: +52-664-625-9681

**SMK Mexicana S.R.L. de C.V. Mexico City Office** ■ ■  
Alfonso Nápoles Gandara 50, 4th Floor  
Col. Peña Blanca Santa Fe,  
Mexico City 1210, MEXICO  
Phone: +52-55-9171-1830  
Fax: +52-55-5004-4474

Europe

**SMK Electronics (Malaysia) Sdn. Bhd.** ■ ■  
Lot 15, Jalan Perusahaan 1, Beranang Industries Estates,  
43700 Beranang, Selangor Darul Ehsan, MALAYSIA  
Phone: +60-3-8766-0166  
Fax: +60-3-8766-7693

**SMK Electronics (Phils.) Corporation** ■  
Lot C-4, Clark Premiere Industrial Park,  
M.A.Roxas Highway, Clark Freeport Zone, Clark Field,  
Pampanga, PHILIPPINES  
Phone: +63-45-599-5780  
Fax: +63-45-599-5781

**SMK Korea Co., Ltd.** ■  
Postal code 14057  
#409, 4F 49, Beolmal-ro 102beon-gil, Dongan-gu,  
Anyang-si, Gyeonggi-do,  
(Kwanyang-dong, Anyang Smartvay 2), KOREA  
Phone: +82-31-422-5231 FAX +82-31-422-5230

**SMK Electronics (Europe) Limited, Dublin H.Q.** ■ ■  
203, Digital Office Centre, Balheary Demesne,  
Balheary Road, Swords, Co Dublin, IRELAND  
Phone: +353-1-253-0530  
Fax: +353-1-686-4900

**SMK Electronics (Europe) Limited, U.K. Branch** ■  
Unit 15 (Suite 4) Parsons Court, Welbury Way,  
Aycliffe Business Park, Newton Aycliffe,  
County Durham, DL5 6ZE, U.K.  
Phone: +44-1325-300-770

**SMK Electronics (Europe) Limited,**  
**U.K. South Office** ■  
Brynglas House, Bryn Road, Coed-y-Mwstwr,  
Coychurch, Bridgend, Mid Glamorgan, CF35 6AE, U.K.  
Phone: +44-1656-339-174

**SMK Electronics (Europe) Limited, France Office** ■ ■  
35 rue d'Avron,  
94170 Le Perreux sur Marne, FRANCE  
Phone: +33-950-93-96-29  
Fax: +33-955-93-96-29

**SMK Electronics (Europe) Limited,**  
**Dusseldorf Branch** ■  
Berliner Allee 67  
40212 Dusseldorf, GERMANY  
Phone: +49-211-159-63-122

**SMK Electronics (Europe) Limited, Belgium Office** ■  
Vijfstraten 60  
3140 Keerbergen, BELGIUM  
Phone: +32-49-550-0599





1929

Company reorganized and renamed Showa Musen Kogyo Kabushiki Gaisha.



Part assembly scene in the 1950s



1973

Terutaka Ikeda inaugurated as President and COO.

1978

Listed on the first section of the Tokyo Stock Exchange.

1985

Changed the company name to SMK Corporation.  
First SMK technology exposition held.

2012

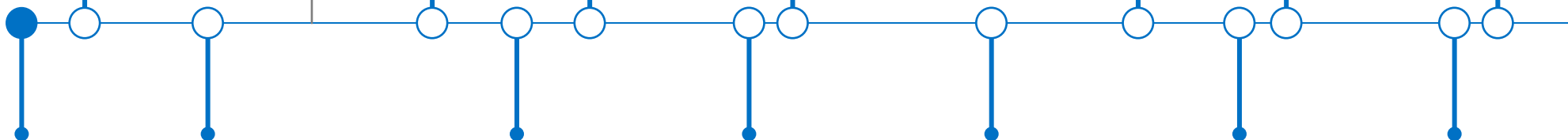
Yasumitsu Ikeda inaugurated as President and COO.

2016

Fortieth Anniversary of Showa Ikeda Memorial Foundation.

2022

Transition to Tokyo Stock Exchange Prime Market.



1925

The late Heishiro Ikeda established Ikeda Musen Denki Seisakujo.

1937

Olympic 680 model receiver was awarded a prize at the first competitive exhibition held by the Japan Radio Association.



1976

Showa Ikeda Memorial Foundation established.



1984

Completed construction of the current Head Office building.



2002

Tetsuya Nakamura inaugurated as President and COO.

2015

Ninetieth Anniversary. Ninth SMK technology exposition, "SMK TEXPO 2015" held.



2021

First disclosure of the Medium-Term Business Plan.



The power transformers we produced in 1929, when Showa Musen Kogyo Co., Ltd. was founded, were trademarked as "Olympic." "Link the world wirelessly. Foster a company rich in the youth and vitality of the Olympic Games, and in the future, spread our sales routes around the world." These were the ideas behind this trademark. In 1932 we opened our Head Office Factory, and started producing radio receiving equipment for general consumers.

Then in 1937 our "Olympic 680" model dynamic 4-sphere receiver took a prize for excellence at the First Radio Competitive Exhibition, held by the Japan Radio Association, beating out 107 other exhibited devices for the prize. This amazing result was just five years after we started out making receivers. The photo shows this same model, currently housed at SMK.



\*Android TV is a trademark of Google LLC.

\* USB Type-C® is a registered trademark of USB Implementers Forum.

\* Milweb™ is a trademark of SMK corporation.

\*Other products and company names listed in this booklet are the registered trademarks or trademarks of their respective holders.

Published in August 2023

# CREATIVE CONNECTIVITY

—Challenge, Creativity, Solutions

<https://www.smk.co.jp/>

